



Saga V6 User Manual

SAGA1-V6 Transmitter-



- 1- Protective Rubber Case
- 2- Function Buttons
- 3- LED Power Indicator
- 4- START Buttons 'A' & 'B'
- 5- STOP Button
- 6- Belt Clip

SAGA1-V6 Receiver-



- 1- External Antenna Connection Point
- 2- Function Buttons
- 3- LED Power Indicator
- 4- START Buttons 'A' & 'B'
- 5- STOP Button
- 6- Control Panel Slide Cover
- 7- Pre-wired Output Cable

General Operation

Replacing the batteries in the transmitter

1. Unscrew the bottom casing and remove it from the transmitter.
2. Install 2 new AA Batteries into the battery compartment (ensure polarity of the batteries is correct).
3. Replace the bottom casing back on to the transmitter.
4. Press and hold the 'Start Push Button A' & 'Start Push Button B' simultaneously to power on the system,
5. Press function button for operation.

Deactivate the operation of the transmitter.

1. Press 'STOP' Push Button to deactivate the transmitter. Switch off the receiver with the isolator switch.



Transmitter LED Indicator

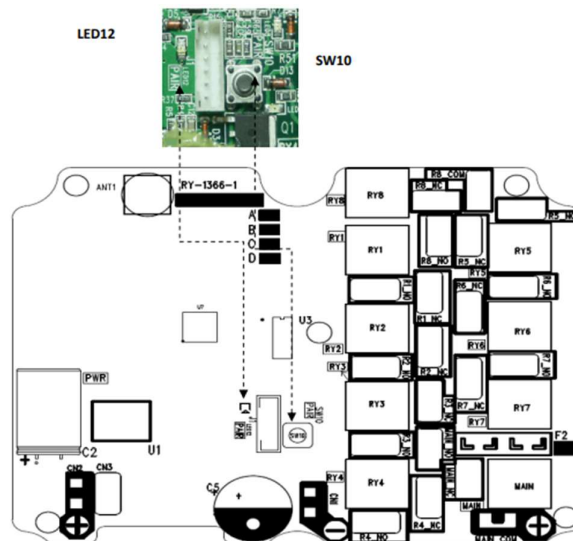
1. **RED** (Blinking rapidly) – Transmitter is not activated correctly, or a push button is jammed.
2. **RED** (Blinking slowly) – Transmitter is activated correctly, but the receiver is not connected properly.
3. **GREEN** (Blinking slowly) – Transmitter and Receiver are both working correctly.

Transmitter Battery LED Indicator

1. **GREEN** – Full Power- Operate as usual.
2. **YELLOW** – Mid Power – Stop operation until new batteries are replaced.
3. **RED** – Low Power – A stop signal will be sent to automatically turn off the receiver. To avoid disruption to operation, check batteries frequently.

Pairing Transmitter to Receiver

- Before carrying out the pairing process, please ensure the transmitter and receiver are switched off.
 - Please note, this process has a time limit of 30 seconds. If the process is not complete in this time frame, it will terminate automatically. We advise that 2 people carry out this procedure.
1. Remove the receiver upper casing, then press and hold **SW10 (Receiver)** for 3 seconds. The **LED12** will flash **RED** constantly.
 2. Press and hold 'Push Buttons 1 & 2' on the transmitter, then press 'Start Push Button A'.
 3. The LED indicator on the transmitter will flash **GREEN**.
 - Press 'Push Button 1' to confirm the pairing process. This stores the receivers ID code into the transmitter memory.
 - Or press 'Push Button 2' to abandon the process.



Note: When assembling the receiver casing, please ensure that the pressure balance airbag is not compressed by the wires.