



# COMBILOAD

Designed for efficiency and adaptability, with capabilities to carry a wide array of equipment from access platforms to heavy-duty excavators.

## Specification

Available 14-32T GVW with 6-9.7m internal deck length. Heavy-duty low-profile beavertail body built with high tensile I-beam crossmembers, which are threaded through the body runners. Crossmembers spaced at nominal 300mm centres for superior point loading. Double bend beavertail section with round steel bar at each break-point for enhanced strength and ease of use.

Main body shotblasted, cleaned and then painted in two-pack paint, in customer specified RAL colour. Headboard, ramps and other steel components hot-dip galvanised for maximum protection.

All electrics fed through single gully enclosed wiring loom with sealed boxes and super seal connections, to protect wiring from corrosion and water ingress.

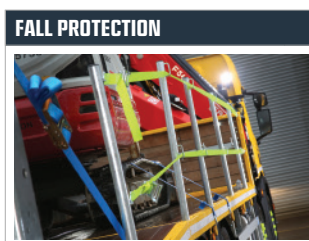
Vehicle fully type approved with most common chassis covered under Whole Vehicle Type Approval certification.



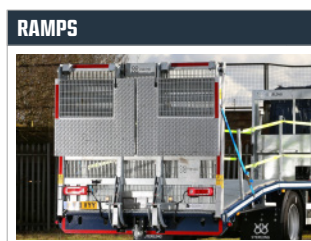
Heavy duty Angle side rave



Folded 1600mm galvanised headboard  
ChainLock bars to headboard  
Fold out worklights to headboard



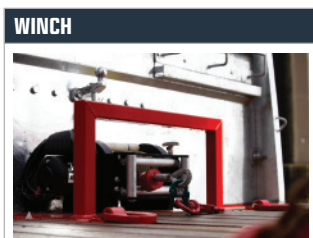
Post & Socket fall arrest  
Storage tray  
Access steps to front nearside



Full-width 2.5m double flip ramps



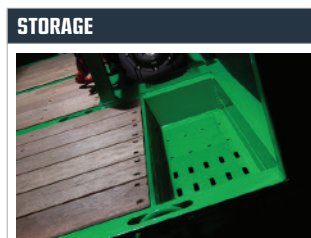
Hardwood Deck  
Steel mesh overlay to beavertail  
Galvanised steel grating to ramps



12,000lb Electric Winch



Lashing rings every 900mm  
Lashing rings under side rave (only on the 32T model)



1x 1000mm plastic toolbox  
Recessed chain trays at front of body

# OPTIONS

We offer ten additional options that are available for your Combiload truck body.

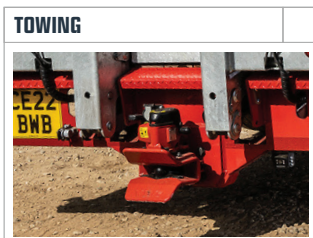
Please tick ☒ the additional options you wish to be included on your Combiload build.

**CHASSIS GROSS WEIGHT:**  
REQUIRED\*

☒ 14-16T ☒ 18T ☒ 26T ☒ 32T



☒ Upgrade to stainless steel 1.0m toolbox



☒ 3.5t ball & jaw coupling  
☒ VBG Drawbar coupling



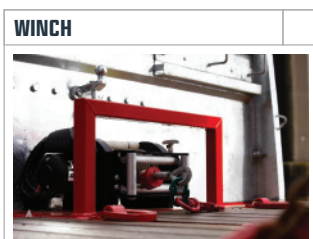
☒ Full width with gate



☒ Upgrade to Channel Side Rave with lashing bars



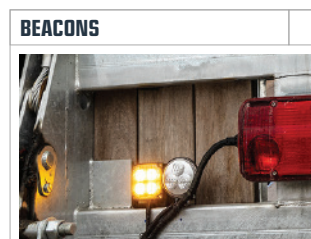
☒ Centre lashing rings in runners  
☒ Single dropsides to front of body  
☒ Double dropsides to both sides of body



☒ Winch channel to centre of flat deck  
☒ Snatch block & anchors



☒ Rear of ramps  
☒ Under backend  
☒ Halfway down body  
☒ At the front



☒ In Grille  
☒ Pair on headboard  
☒ Pair on rear of ramps  
☒ Runway deck lights



☒ 3 cones and storage  
☒ Fire Extinguisher  
☒ Oil Spill Kit



☒ Wheel Chocks supplied with stowage  
☒ Shovel and broom  
☒ Mesh infill to top half



**STERLING**

The Higher Standard.